

## Stainless Steel Knurled "C" Washers

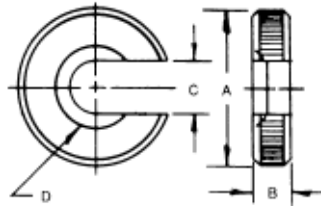
- ▶ Made from 303 stainless steel
- ▶ Knurled edge



PART #	A	B	C
7625	5/8	3/16	11/64
7626	3/4	3/16	13/64
7627	7/8	3/16	17/64
7628	1	1/4	21/64
7629	1-1/4	5/16	25/64

## Stainless Steel Equalizing "C" Washers

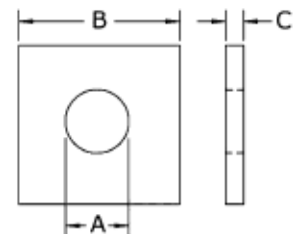
- ▶ Made from 300 series stainless steel
- ▶ Knurled edge



PART #	A	B	C	D x 45°
7630	5/8	3/16	3/16	5/64
7631	3/4	3/16	7/32	5/64
7632	7/8	3/16	9/32	3/32
7633	1	1/4	11/32	1/8
7634	1-1/4	5/16	13/32	1/8

- ▶ Available is case hardened steel with a black oxide finish and 300 series stainless steel
- ▶ Used for shimming machinery and various hardware applications that require an extra thick washer
- ▶ Square washers are used in slots and channels to keep them from rotating

## Square Flat Washers



Steel PART #	Stainless Steel PART #	Bolt Size	A	B	C
SW-1	SW-1SS	1/4	5/16	2"	1/4
SW-2	SW-2SS	3/8	7/16	2	1/4
SW-3	-	7/16	1/2	2	1/4
SW-4	SW-4SS	1/2	9/16	2	1/4
SW-5	SW-5SS	5/8	11/16	2	1/4
SW-6	SW-6SS	3/4	13/16	2	1/4
SW-7	SW-7SS	7/8	15/16	2	1/4
SW-8	SW-8SS	1"	1-1/16	2	1/4